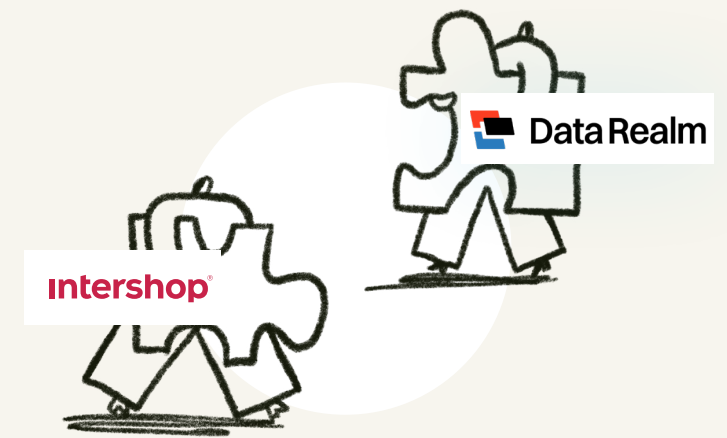


# Intershop and Data Realm are trusted partners for leading B2B companies looking to modernize their digital commerce.

By combining deep industry expertise with innovative technology and a hands-on approach, the partnership solves complex requirements and optimizes performance for sustained revenue growth.



## Why Intershop?

- Most complete out-of-the-box B2B commerce functionality with modular PIM, OMS, CMS, search, and personalization built in
- Integrated AI capabilities - personalized recommendations, copilots, and agents - enhance the buying journey, boost conversion, and reduce manual effort
- Purpose-built for complex B2B enterprise needs including multi-tier pricing, multi-storefronts, global catalogs, and personalized workflows

## Why Data Realm?

- Certified Intershop partner delivering extensive expertise in Java-based and modular commerce architectures for enterprise deployments
- 100% onshore senior development team with over 100 years of combined platform experience
- Predictable project delivery driven by deep understanding of Intershop's Java-based architecture
- Reduced risk, faster timelines, and friction-free collaboration

### KEY BUSINESS BENEFITS:

- Better buyer experiences that improve conversions
- Reduced operational overhead and fewer manual processes
- Faster launch cycles and improved ability to pivot with market demands
- Lower total cost of ownership (TCO) and future-ready architecture

**intershop**<sup>®</sup>

🌐 [www.intershop.com](http://www.intershop.com)  
✉ [info@intershop.com](mailto:info@intershop.com)  
in [intershop-communications](https://www.linkedin.com/company/intershop-communications)

 **Data Realm**

🌐 [www.data-realm.com](http://www.data-realm.com)  
✉ [lee.trotter@data-realm.com](mailto:lee.trotter@data-realm.com)  
in [data-realm](https://www.linkedin.com/company/data-realm)

CONNECT WITH  
OUR EXPERTS →

